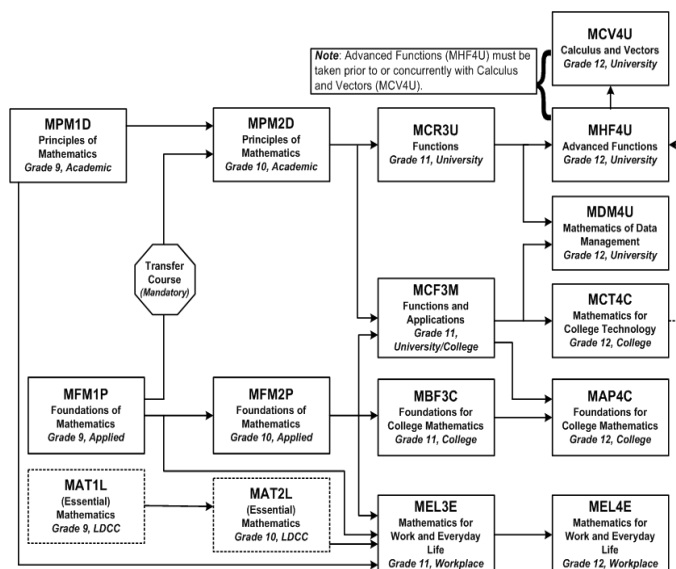


To Consider

... make wise and informed decisions about the Grade 9 Mathematics course selection.

... graduation from secondary school requires the successful completion of at least three (3) courses in mathematics (with at least one of these at the Grade 11 or 12 level).



Mathematics Pathways

Pierre Elliott Trudeau High School

Further mathematics courses may be, but are not necessarily, required by universities and colleges for admission.

To determine the appropriate math required for postsecondary pathways go to the following sites:

Ontario Colleges
www.ontariocolleges.ca

eInfo
www.electronicinfo.ca

Ontario University Application Centre
www.ouac.ca

Need Math Help?

<https://homeworkhelp.ilc.org>

- For Grades 7 – 10
- Get resources and tools 24/7
- Ask a tutor
- FREE!



Adapted from the Examining Mathematics Pathways developed by the North West 1 Family of Schools with support from the Mathematics and Numeracy Program Department 2007
 Toronto District School Board



The essence of mathematics is not to make simple things complicated but to make complicated things simple.

- S. Gudder

INFORMATION ABOUT GRADE 9 ACADEMIC MATH (MPM1D)

Work Expectations:

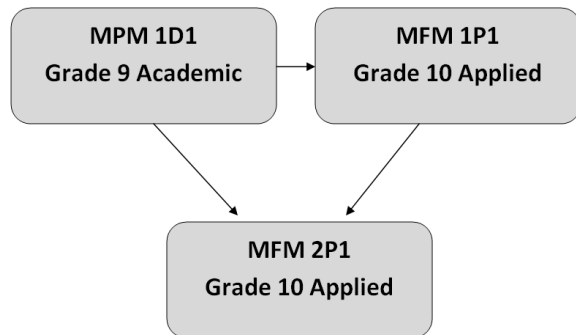
Students are expected to:

- actively participate in class discussions
- complete classroom work
- complete homework independently

Who should consider taking the Grade 9 Academic Course?

Students achieving 70% or higher in Grade 8 Mathematics.

Both MPM1D1 and MFM1P1 can lead to grade 10 applied MFM2P1.



INFORMATION ABOUT GRADE 9 APPLIED MATH (MFM1P)

Work Expectations:

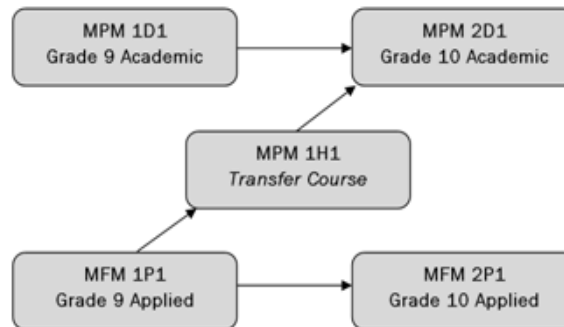
Students are expected to:

- actively participate in class discussions
- complete classroom work

Students may be asked to complete additional homework.

Who should consider taking the Grade 9 Applied Course?

Students who have achieved Grade 8 Mathematics marks in the 50% to 70% range.



Transfer Course (MPM1H1)

This transfer course is made available to offer students a means of transferring from the Grade 9 Applied MFM1P1 to the Grade 10 Academic Mathematics course MPM2D1. It has been designed as a half-credit course. Students who select this course will also take GLD201 (Designing Your Future) for the other half-credit.

INFORMATION ABOUT GRADE 9 LDCC MATH (MAT1L)

Work Expectations:

Students are expected to:

- actively participate in class discussions
- complete assigned work

Who should consider taking the Grade 9 Locally Developed Compulsory Credit (LDCC) Math Course?

- Students transferred to Grade 9
- Students with gaps in their knowledge of Mathematics

Note: A student can acquire two math credits by taking Grade 9 Applied

